

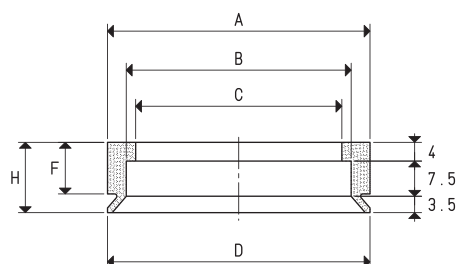
FLAT CIRCULAR CUPS WITH SUPPORT



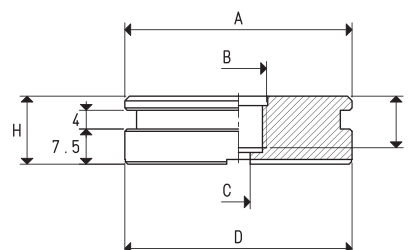
The cups described in this page has been designed for gripping soft drink cans. They can obviously be also used for gripping other objects with flat smooth or slightly rough surfaces. The shape of its lip allows a firm grip of the load to be handled, eliminating any oscillation and reducing the air volume contained within, thus allowing a quicker grip and release. These cups can be cold-assembled, with no adhesives, onto their anodised aluminium support equipped with a threaded hole in the centre to allow their fastening to the machine. These cups are extremely easy to replace; for the spare part, in fact, all you have to do is request the cup indicated in the table in the desired compound.

| CUP | | | | | | | |
|------------|-------------|--------|--------|--------|--------|----|----|
| Art. | Force Kg | A ∅ | B ∅ | C ∅ | D ∅ | F | H |
| 01 56 15 * | 6.15 | 56 | 48 | 44 | 56 | 11 | 15 |

* Complete the code indicating the compound: A= oil-resistant rubber; N= natural para rubber; S= silicon



| SUPPORT | | | | | | | | | | |
|----------|--------|--------|--------|--------|----|------|---------------------|-------------|-------------|--|
| Art. | A ∅ | B ∅ | C ∅ | D ∅ | F | H | Support material | Cup art. | Weight g | |
| 08 08 83 | 48.5 | M12 | 5 | 48.5 | 11 | 14.5 | aluminium | 01 56 15 | 67.4 | |



| CUPS WITH SUPPORT | | | | | | | | | | |
|-------------------|-------------|--------|--------|--------|--------|----|----|-------------|------------------|-------------|
| Art. | Force Kg | A ∅ | B ∅ | C ∅ | D ∅ | F | H | Cup Art. | Support. Art. | Weight g |
| 08 56 15 * | 6.15 | 48.5 | M12 | 5 | 56 | 11 | 18 | 01 56 15 | 00 08 83 | 78 |

* Complete the code indicating the compound: A= oil-resistant rubber; N= natural para rubber; S= silicon

