



SOLENOID VALVE ACCESSORIES AND SPARE PARTS WITH LOW ABSORPTION ELECTRIC COIL

SOLENOID PILOT VALVES WITH BUILT-IN LOW ABSORPTION ELECTRICAL COIL

The solenoid valves are small three-way valves, driven by a built-in electric coil, capable of managing compressed air or vacuum, for driving solenoid valves.

The electric coils of the solenoid pilot valves are fully plastic-coated in synthetic resin, watertight, insulation class F (up to 155°C) as per standard EN 60664, with 3 mm two-terminal electrical connections for connectors in compliance with EN 175301-803 - C.

Protection degree IP 54; IP 65 with connector inserted.

Tolerance permitted on the nominal voltage value: ±10%

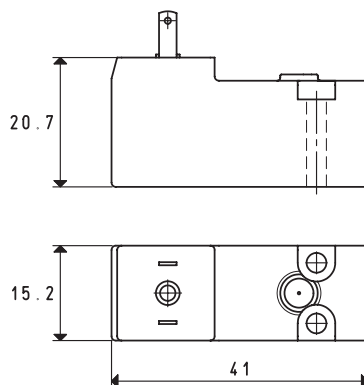
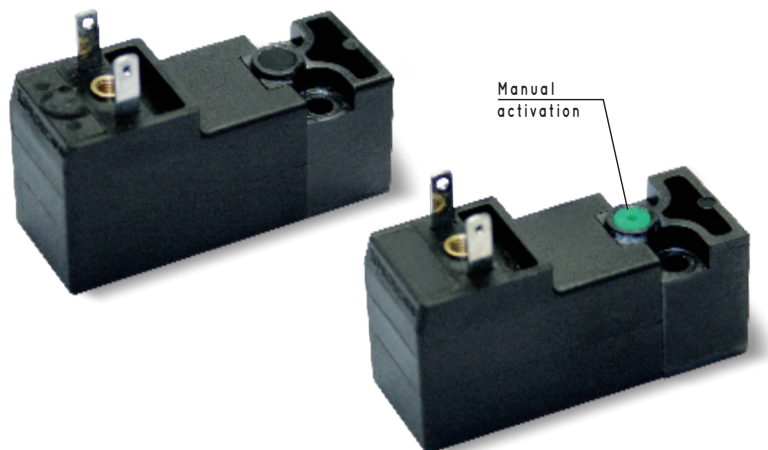
Tolerance permitted on the frequency value: ±5%

Room temperature: from -10 to +45°C

Fluid temperature: from -10 to +95°C

Electrical power: from 1 to 2 W.

3D drawings are available on vuototecnica.net

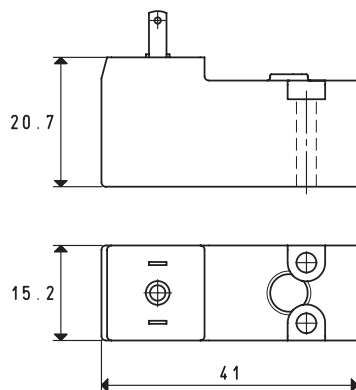


SOLENOID PILOT VALVES WITH BUILT-IN LOW ABSORPTION ELECTRICAL COIL

Item	Service ED	Power W	Electrical voltage Volt	Pressure (bar)		Weight g
				min	max	
00 07 301	100%	1	12 / 50 - 60Hz	0	8	32
00 07 302	100%	1	24 / 50 - 60Hz	0	8	32
00 07 303	100%	2	12 / DC	0	8	32
00 07 304	100%	2	24 / DC	0	8	32
For solenoid valves item						
07 01 13 - 07 02 13 - 07 03 13 - 07 04 13 - 07 05 13 - 07 06 13 - 07 08 13 - 07 09 13 07 03 13 LP - 07 04 13 LP - 07 05 13 LP - 07 06 13 LP						
00 07 305	100%	1	12 / 50 - 60Hz	0	1	32
00 07 306	100%	1	24 / 50 - 60Hz	0	1	32
00 07 307	100%	2	12 / DC	0	1	32
00 07 308	100%	2	24 / DC	0	1	32
For solenoid valves item						
07 03 43 - 07 04 43 - 07 05 43						

SOLENOID VALVE ACCESSORIES AND SPARE PARTS WITH LOW ABSORPTION ELECTRIC COIL

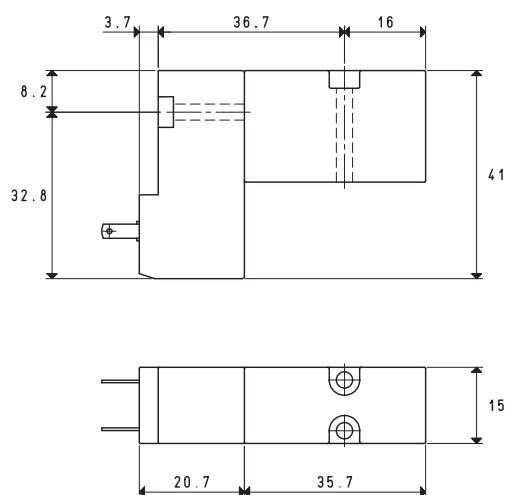
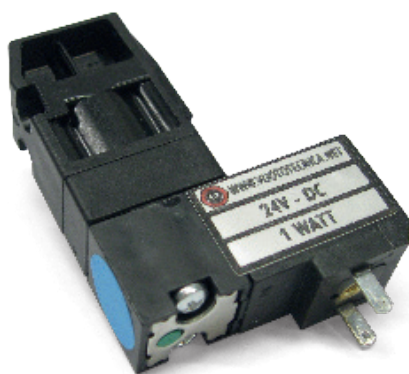
SOLENOID VALVE ACCESSORIES AND SPARE PARTS WITH LOW ABSORPTION ELECTRIC COIL



BISTABLE IMPULSE SOLENOID PILOT VALVES WITH BUILT-IN LOW ABSORPTION ELECTRICAL COIL

Item	Service ED	Power W	Electrical voltage Volt	Pressure (bar)		Weight g
				min	max	
00 07 309	100%	1	12 / DC	0	8	30
00 07 310	100%	1	24 / DC	0	8	30
For solenoid valves item						
07 01 53 - 07 02 53 - 07 03 53 - 07 04 53 - 07 05 53 - 07 06 53 - 07 08 53 - 07 09 53 07 03 53 LP - 07 04 53 LP - 07 05 53 LP - 07 06 53 LP						
00 07 311	100%	1	12 / DC	0	1	30
00 07 366	100%	1	24 / DC	0	1	30
For solenoid valves item						
07 03 63 - 07 04 63 - 07 05 63						

SOLENOID PILOT VALVES WITH INTERFACE VALVES



SOLENOID PILOT VALVES WITH INTERFACE VALVES

Item	Pressure (bar)		Weight g	Electrical voltage Volt	For solenoid valves item
	min	max			
00 15 437	0	8	52	24 / DC	07 06 13 - 07 06 13 LP - 07 08 13 - 07 09 13
00 07 411	0	8	52	24 / DC (bistable)	07 06 53 - 07 06 53 LP - 07 08 53 - 07 09 53
00 07 412	0	8	52	24 / 50 - 60Hz	07 06 13 - 07 06 13 LP - 07 08 13 - 07 09 13



SOLENOID VALVE ACCESSORIES AND SPARE PARTS WITH LOW ABSORPTION ELECTRIC COIL

CONNECTORS

Connectors are essential elements for bringing electricity to solenoid pilot valves with built-in low absorption coil.

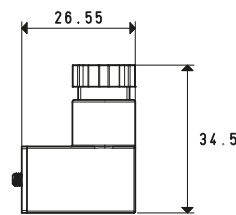
They are available in the simple plug version, with a LED for signalling the presence of voltage and, upon request, with anti-interference circuits, with protection against overvoltage and polarity inversion. When correctly installed, all connectors provide full protection against water jets, according to EN 60529 standards (protection class IP 65).

Moreover, they meet EN 60664 standards, working voltage up to 250 V, overvoltage category II, Degree of use 3, regarding insulation class.

In all contacts, a snap joint between contact holders and the external protection guarantees a safe locking and easy assembly.

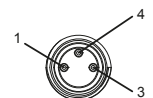
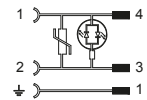
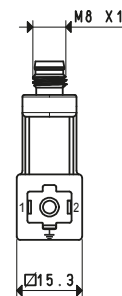
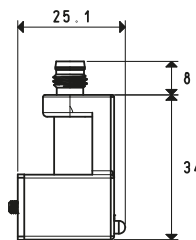
Safe locking is essential for guaranteeing the operator full protection when handling the connector. The contact holder can be easily extracted from its casing simply using a screwdriver. This operation also allows orienting the earthing contact in the desired direction.

3D drawings are available on vuotecnica.net



WIRING CONNECTORS FOR COILS

Art.	Voltage	Nominal flow rate of contacts A	Connection	Form	Cable gland	Temperature in operation °C	Material	Weight g	Notes
00 15 157	max 250V	max 10	2P+T	C	PG 7	-40 ÷ +60	Transparent plastic	8	With yellow LED
For coils item									
00 07 301 - 00 07 302 - 00 07 303 - 00 07 304 - 00 07 305 - 00 07 306 - 00 07 307 - 00 07 308 00 07 309 - 00 07 310 - 00 07 311 - 00 07 366 - 00 07 411 - 00 07 412 - 00 15 437									



M8 3 PIN CONNECTORS FOR COILS

Art.	Voltage	Nominal flow rate of contacts A	Connection	Form	Connector	Temperature in operation °C	Material	Weight g	Notes
00 07 424	V24DC - 24V/50 - 60Hz	max 4	2P+T	C	M8 3 pin	-40 ÷ +60	Black plastic	11	With red LED and VDR
For coils item									
00 07 301 - 00 07 302 - 00 07 303 - 00 07 304 - 00 07 305 - 00 07 306 - 00 07 307 - 00 07 308 00 07 309 - 00 07 310 - 00 07 311 - 00 07 366 - 00 07 411 - 00 07 412 - 00 15 437									

Transformation ratio: N (newton) = Kg x 9.81 (force of gravity)

inch = $\frac{\text{mm}}{25.4}$; pounds = $\frac{\text{g}}{453.6} = \frac{\text{Kg}}{0.4536}$